

Northampton County

2017 State of the County Health Report (SOTCH)



**Northampton County Health Department
9495 NC Highway 305
P.O. Box 635 Jackson, NC 27845
(252)534-5841
Andy Smith, Health Director
Virginia McClary, Health Educator**

What is a State of the County Report? (SOTCH)

The State of the County Health Report serves as an update to the progress made on priorities selected in the most recent Community Health Assessment.

What is a Community Health Assessment?

Northampton Healthy Carolinians Task Force distributed more than five hundred 2014 Community Health Opinion Surveys to residents in Northampton County. Three hundred and thirty-five surveys were returned and analyzed. The criteria for selection of priorities were:

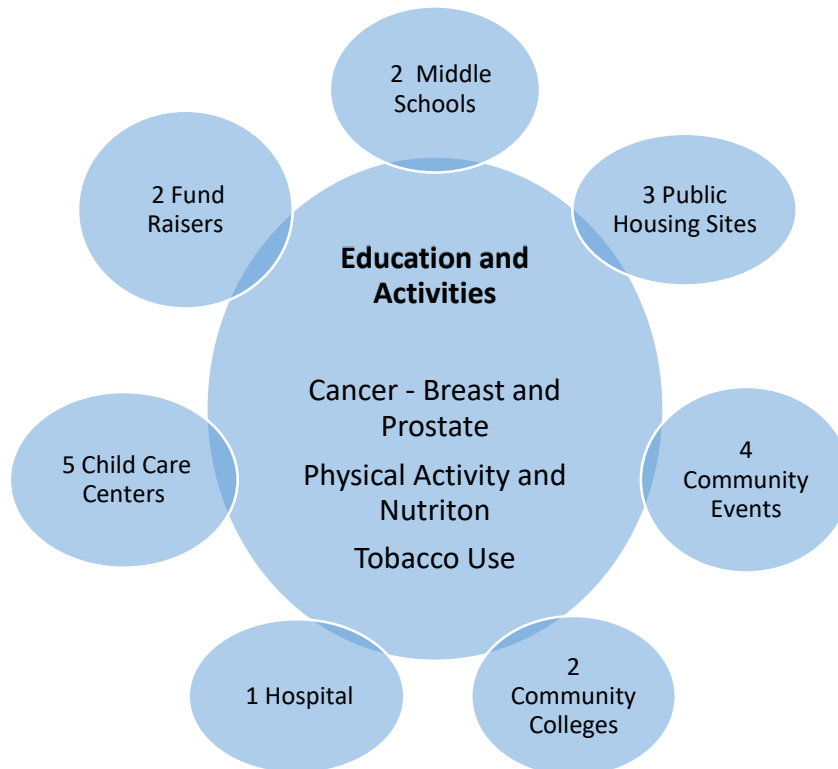
- The magnitude of the problem
- The seriousness of the consequences of the problem
- The feasibility for correcting the problem

The priorities selected in the 2014 Community Health Assessment are:

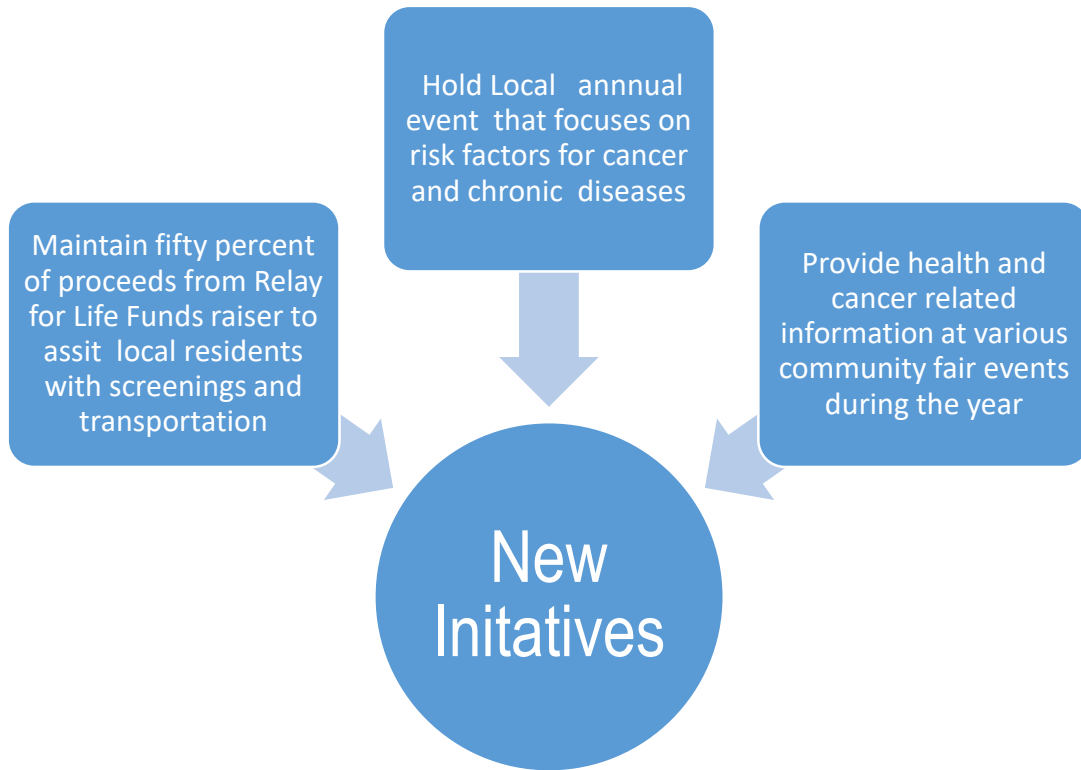
- ✓ Cancer: Breast and Prostate
- ✓ Physical Activity and Nutrition
- ✓ Tobacco Use

A Community Health Assessment is the foundation for improving and promoting the health of residents living in Northampton County.

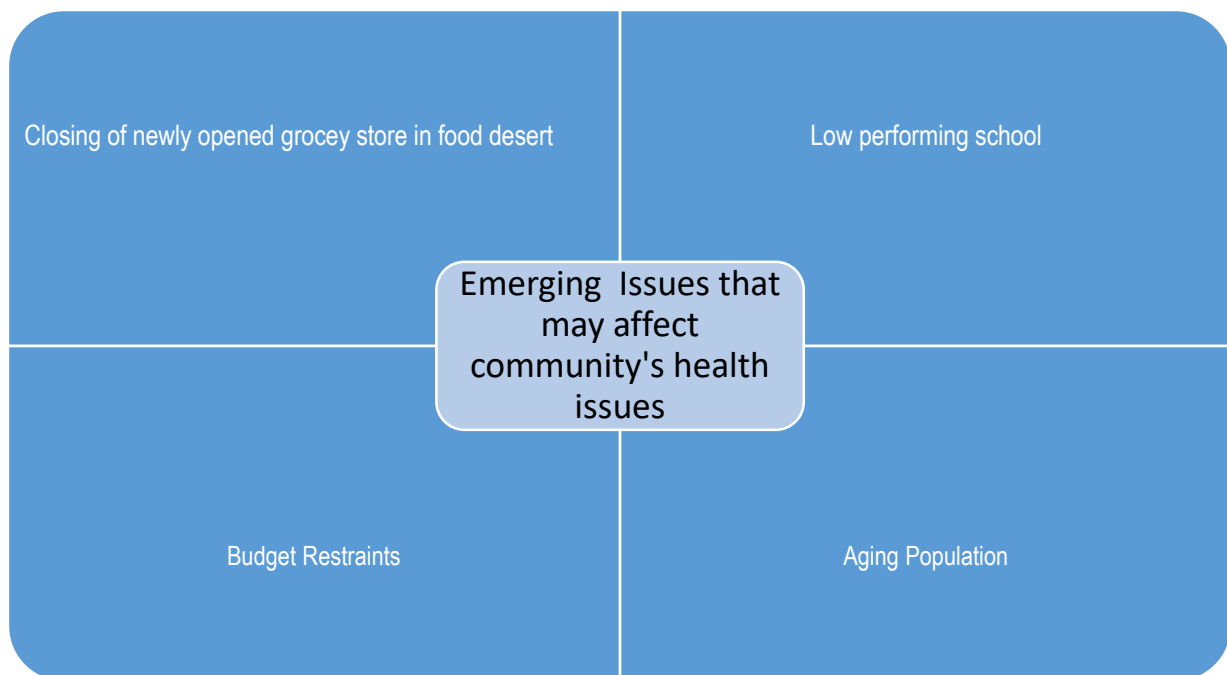
Progress



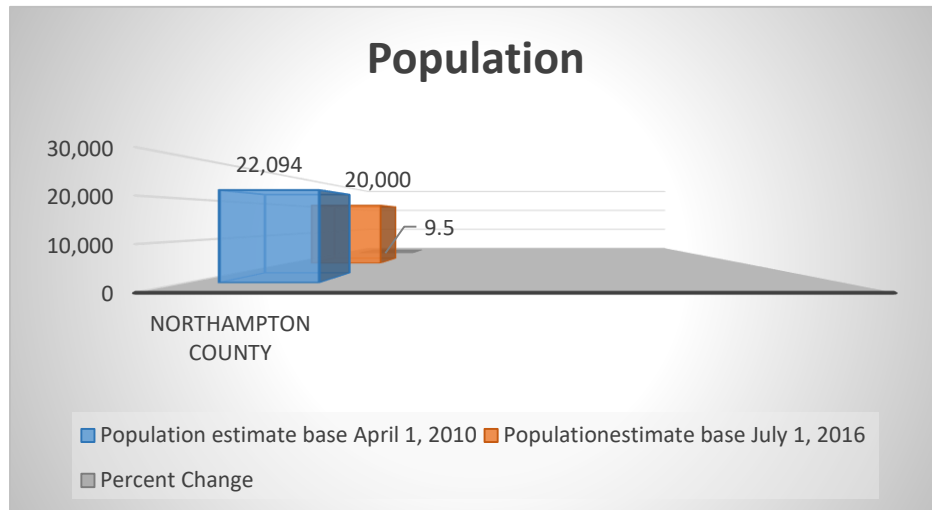
New Initiatives



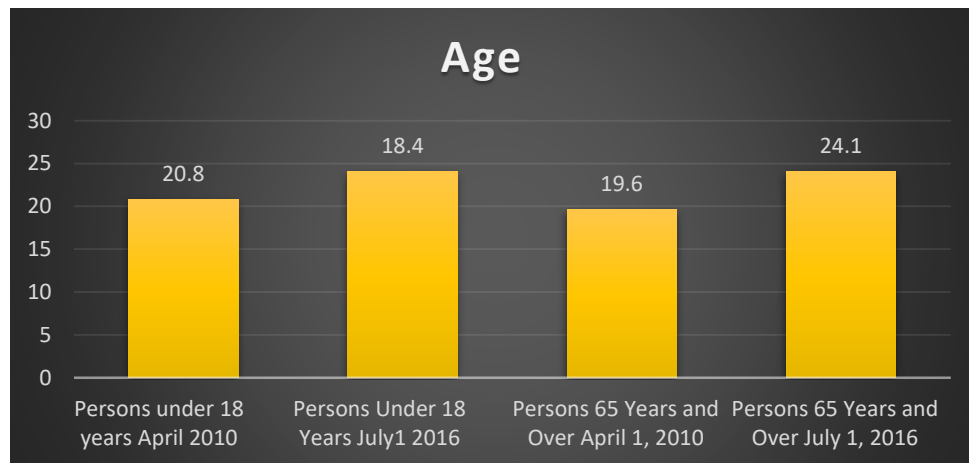
Emerging Issues



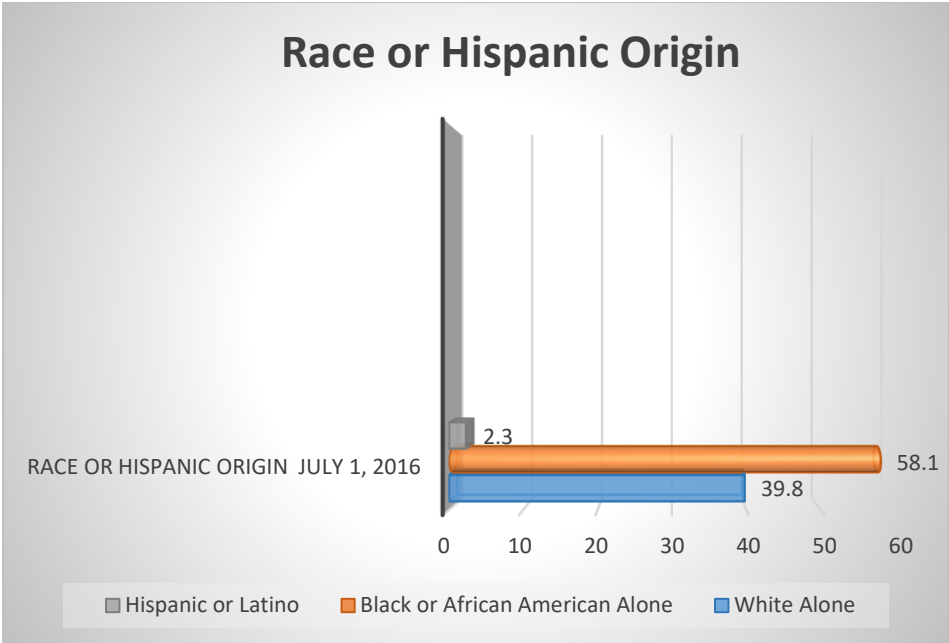
Your County in a Glance



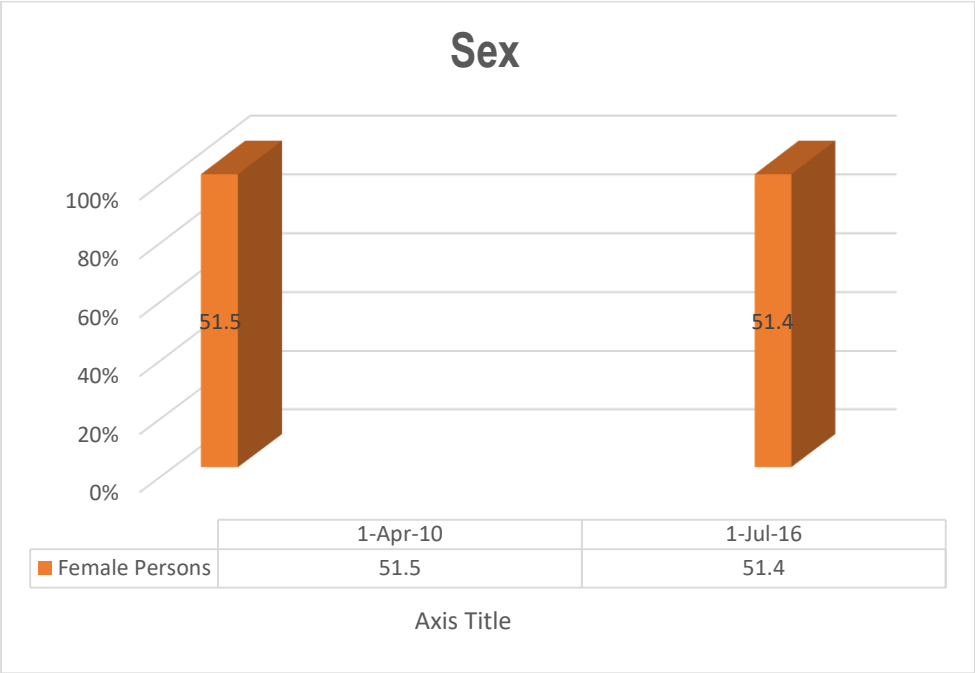
2010 Census www.census.gov/quickfacts/fact/table/northamptoncountynorthcarolina,US
Northampton's population decreased by -9.5% between April 2010 and July 2016.



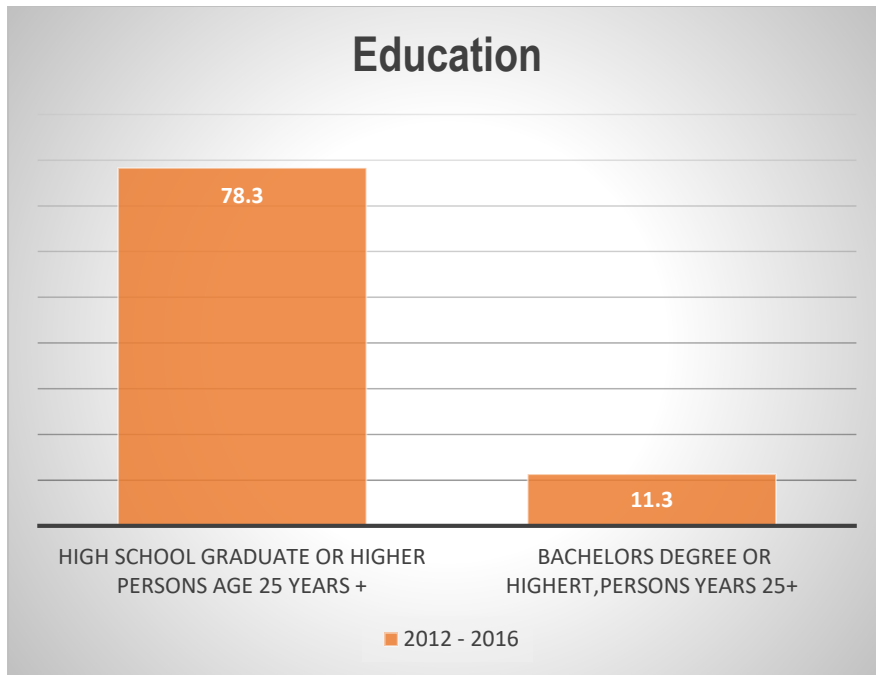
2010 Census www.census.gov/quickfacts/fact/table/northamptoncountynorthcarolina,US
Northampton's population of persons 65 years and older increased between April 1, 2010 and July 2016 by 4.5%, while the age of persons 18 years and younger decreased by 2.4%.



2010 Census www.census.gov/quickfacts/fact/table/northamptoncountynorthcarolina,US
 Northampton's Black or African American population is greater than its white population by 18.3%.

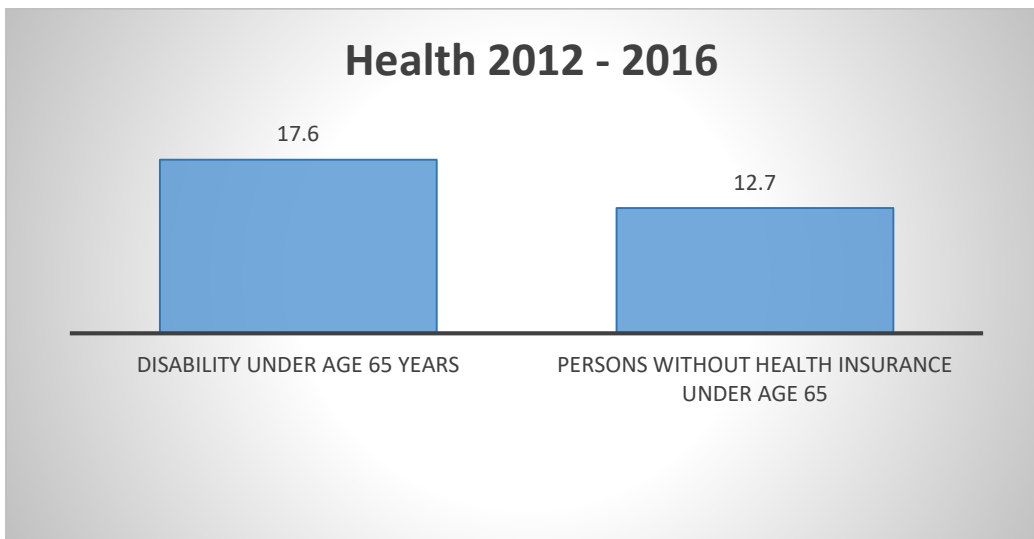


2010 Census www.census.gov/quickfacts/fact/table/northamptoncountynorthcarolina,US
 The majority of Northampton's population is female with a decrease of 0.1% between April 2010 and July 2016.



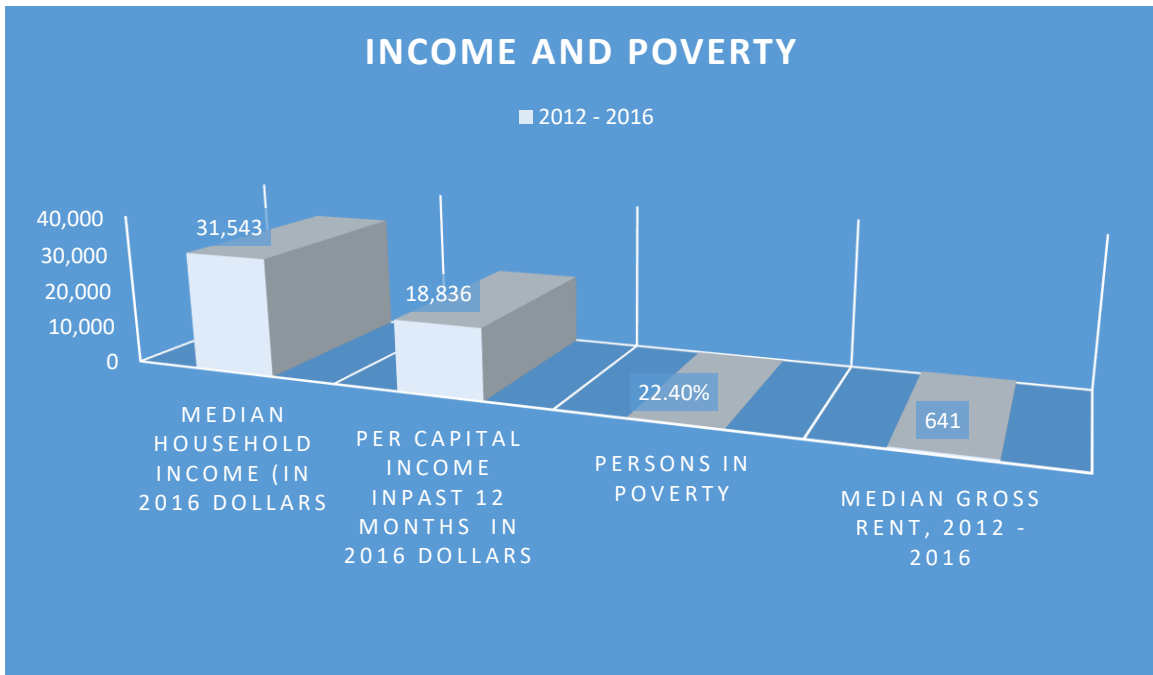
2010 Census www.census.gov/quickfacts/fact/table/northamptoncountynorthcarolina,US

The 2012 - 2016 rate of High School Graduation for Northampton County is 78.3% with the college graduation rate being 11.3% for the same time period.



2010 Census www.census.gov/quickfacts/fact/table/northamptoncountynorthcarolina,US

The rate of persons under age 65 with a disability is 17.6%. The rate of persons under age 65 without health insurance is 12.7%

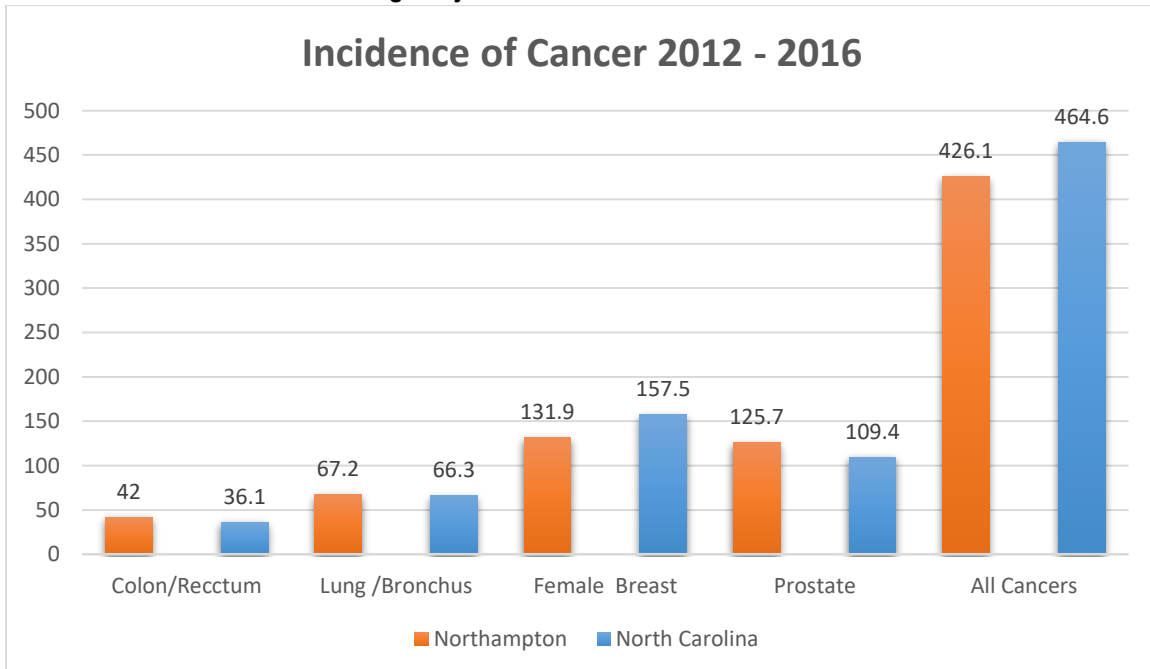


2010 Census www.census.gov/quickfacts/fact/table/northamptoncountynorthcarolina,US

In Northampton County 22.40% of its population lives in poverty. In Northampton County the per capital income (capital per person) is \$18,836. The median gross rent in Northampton County is \$641.00

Changes in Data

Preliminary 2012 – 2016 – Cancer Incidence Rates by County for Selected Sites Per 100,000 Population Age Adjusted to the 2000 US Census

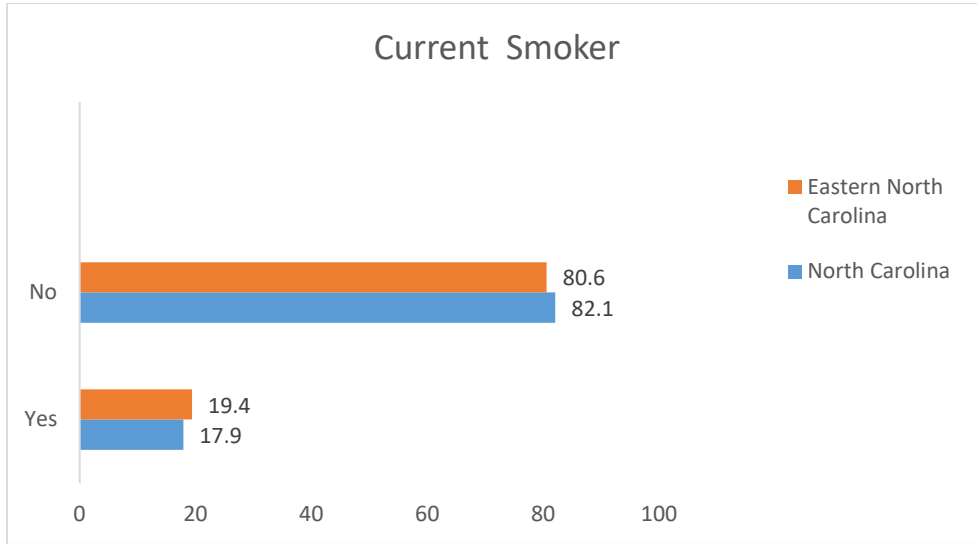


North Carolina State Center for Health Statistics North Carolina Central Cancer Registry -12/2017

From 2012 – 2016 North Carolina has had a decrease in the incidence for the following cancers: colon rectum by 0.5%, lung/bronchus by 0.2%, and in prostate by 6.1%. However, the rate of breast cancer in the state has increased by 0.4%. Northampton County has had a decrease in the incidence of cancer for colon/rectum by 3.3%, female breast by 23.1%, and in prostate by 10.7%. The incidence for Lung cancer has increased by 0.8%. The incident rates for all cancer in the state has decreased by 0.9% and in Northampton the incidence has decreased by 20.1%

2016 BRFSS Survey Results: Eastern North Carolina

Tobacco Use

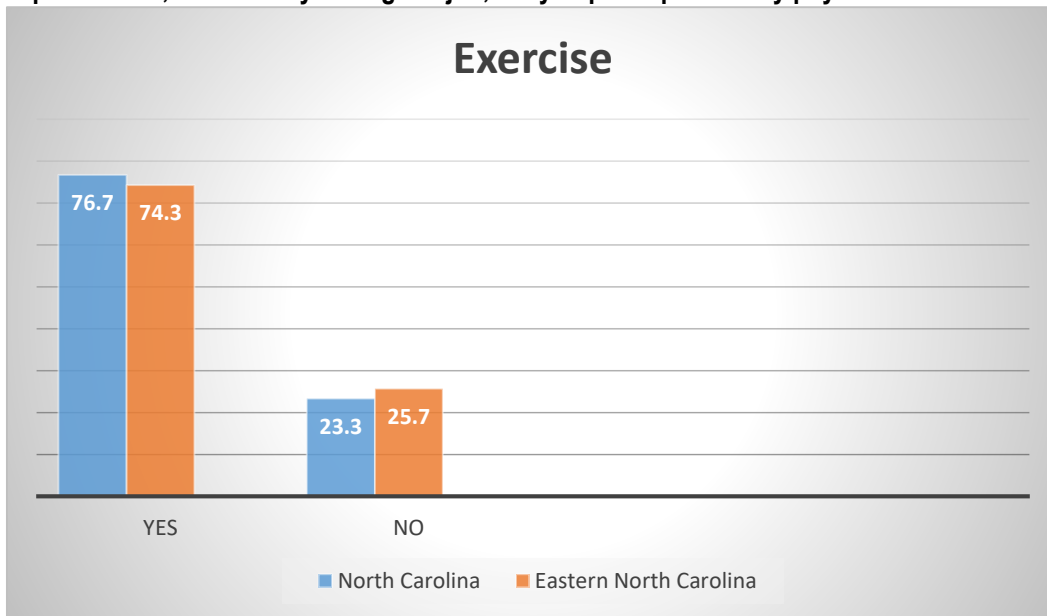


2016 BRFSS Survey Results: Eastern North Carolina

In the 2015 Behavioral Risk Factor Surveillance System the rate of current tobacco users in the state was 19.0. In the 2016 Behavior Risk Factor Surveillance System the rate is 17.9; a decrease of 1.1%. In Eastern North Carolina the rate decreased by 2% from 21.4% to 19.4%.

Physical Activity and Nutrition

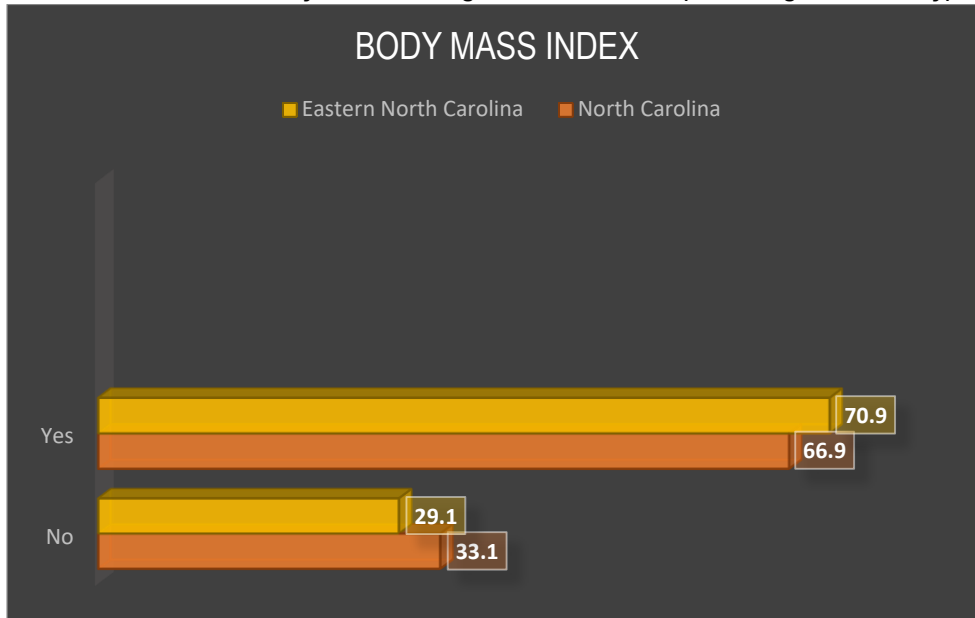
During the past month, other than your regular job, did you participate in any physical activities or exercises?



2016 BRFSS Survey Results: Eastern North Carolina

In 2015, 73.8% of North Carolinians participated in physical activity or exercise. In 2016 the rate increased to 76.7%; an increase of 2.9%. In Eastern North Carolina the rate was 72.0% in 2015. In 2016 the rate for Eastern North Carolina is 74.3; an increase of 2.3%.

Adults who have a body mass index greater than 25>00 (Overweight or Obesity)

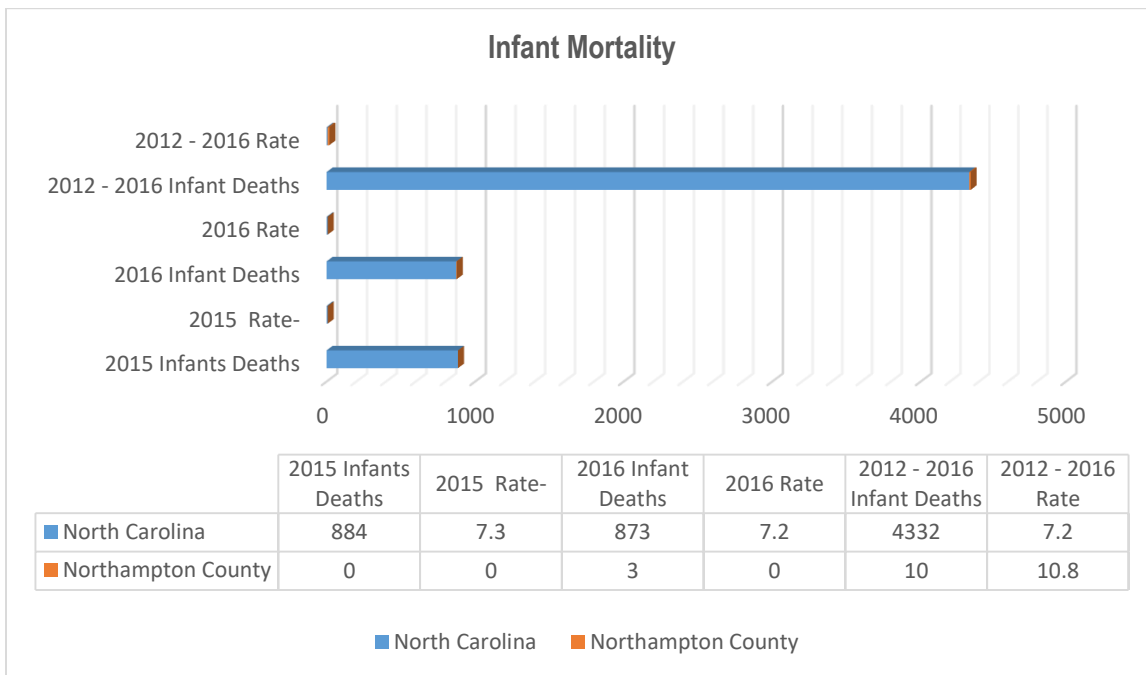


2016 BRFSS Survey Results: Eastern North Carolina Derived Variables and Risk Factors

Adults in North Carolina with a body mass index > than 25 in 2015 was 65.8%. In 2016 the rate was 66.9; an increase of 1.1%. In Eastern North Carolina body mass index for adults in 2015 was 69.0%. In 2016 the rate is 70.9; an increase of 1.9%

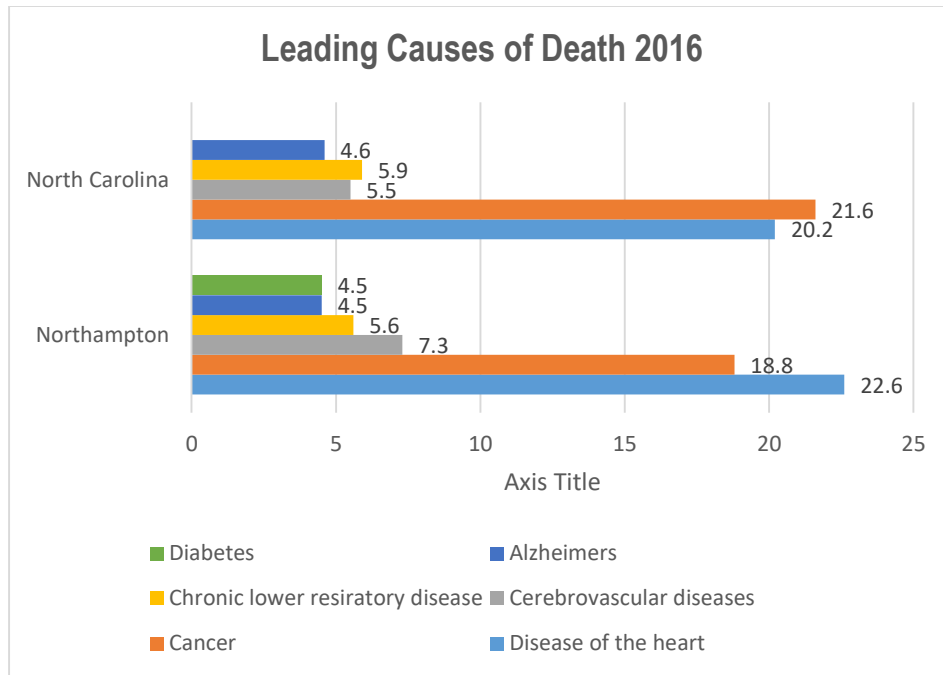
Mortality

**2016 North Carolina Infant Mortality Report, Table 2
North Carolina Resident Infant Death Rates (per 1,000 live births) by Perinatal Care Region (PCR)
and County of Residence: 2015, 2016, and 2012 – 2016**



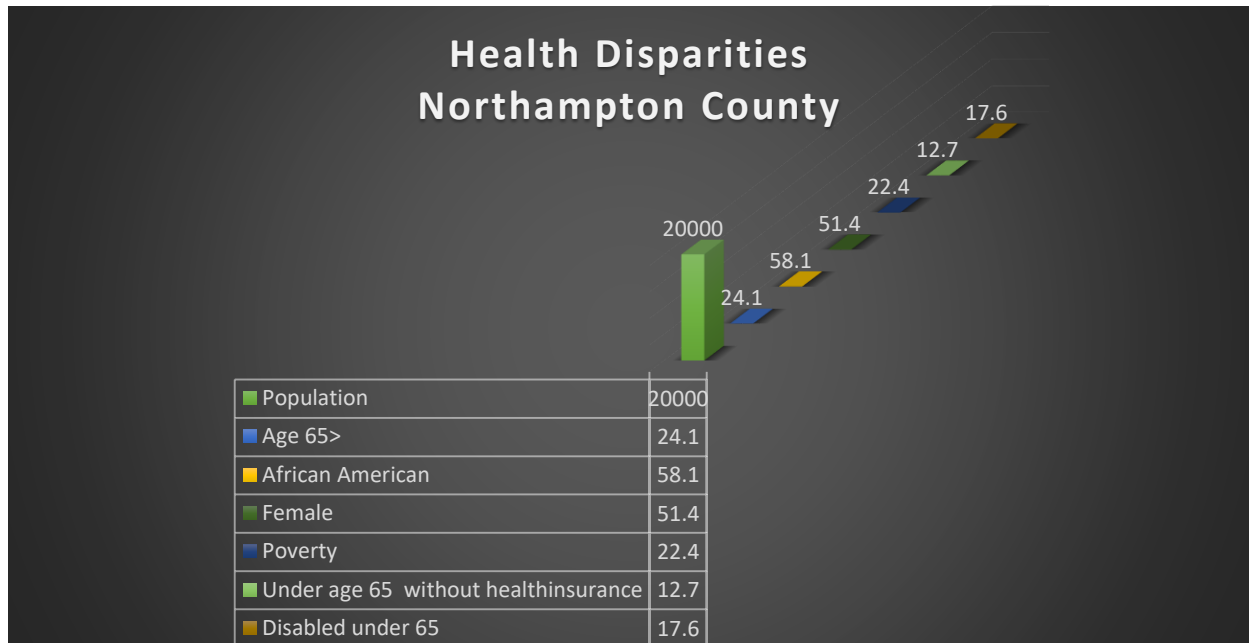
North Carolina State Center for Health Statistics

In 2011 – 2015 Northampton’s infant mortality rate decreased to 8.8% and the state rate increased to 7.2%. In 2012 – 2016 Northampton’s rate was 10.8%; an increase of 2% and the state rate remained at 7.2%.



North Carolina State Center for Health Statistics

In 2015 the leading causes of death for North Carolina and Northampton County was #1 Cancer and #2 Diseases of the Heart. In 2016 the leading cause of death for North Carolina remains Cancer # 1 and Diseases of the Heart # 2. In Northampton County the leading causes of death is Disease of the Heart #1 and Cancer # 2.



Northampton’s racial makeup is 58.1% African American with its gender make up being 51.4% female. Northampton County has a poverty level of 22.4% with 12.7% of its population under the age of 65 without health insurance and 17.6% of the population under the age of 65 are disabled.